

WELCOME TO SMA

5th grade 2011-2012

SCHOOL DAY

7:50-3:10

Students may be dropped off
NO earlier than 7:15. Please
pick them up by 4:00.

REGISTRATION

- If your child is from SLC you will only need these things:
 - Registration form
 - Field Trip Permission
 - Hardship Transfer
 - Proof of Residency
 - Acknowledgment of Code of conduct, Student Handbook and Dress Code
 - Technology agreement (signed in August)
- If you hear of any students that move over the summer, please let us know- we do have a waiting list. Those on the waiting list would like to know as soon as possible.



DAILY SCHEDULE



- Students will have one teacher for Language Arts and Social Studies
- Students will have one teacher for Math and Science
- Electives will be music and art
 - In music students will have choral and instrumental instruction
- Students will have PE every day
 - Students will need to bring tennis shoes and leave them in your locker for PE



SPECIAL PROGRAMS:

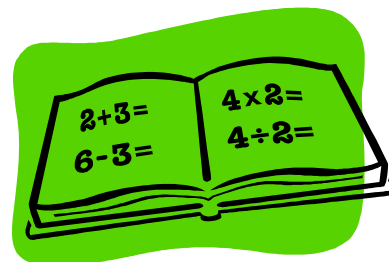
- **Gifted and Talented**
 - Accelerated Math Program
 - Lab based Science Program
 - Differentiation
- **SEA – Seashore Enriched Academics**
 - 4 core areas
- **Special Education/ 504 Services**
 - All ARD mandated services
 - Least restrictive placement
 - Reading Horizons Dyslexia Program



STUDENT HANDBOOK

○ Please visit our website
for the Student Handbook
and the Code of Conduct

○ www.islandfoundation.com



DRESS CODE:



See our website for details
www.islandfoundation.com

No athletic shorts for girls or boys

No baggie pants

No short or tight fitting clothing

No T-shirts with inappropriate graphics

No hats in the building

Athletic shoes for gym



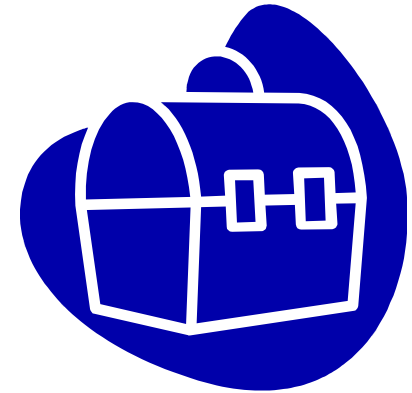
LOCKERS



- A lock and locker will be assigned to each student, we will help students learn how to do the combination.
- They are expected to lock up books and personal possessions to keep them safe.
- They may decorate the inside of their locker using magnets – nothing that will permanently stick to the locker – no decorations on the outside.
- If students lose a lock, they will have to pay for it. They cost \$5.00.
- Parents can alleviate some stress by working with the student on opening a combination lock.



LUNCHES:



- Students may bring their lunch
- Students may choose to purchase lunch
- Lunches may not be purchased on a daily basis
- Students may buy for a month at a time.
- Lunch menus will be sent to your home by email and posted on the bulletin board
- Lunches this year cost \$3.50 per day. We are not sure what they will cost next year.



Monday	Tuesday	Wednesday	Thursday	Friday
			1 Chicken Caesar salad Bread Pudding	2 Pizza Fruit Cookie
5 Enchilada Rice/beans Fruit	6 Sausage Fries Cookie	7 Spaghetti and Meatballs Garlic Bread Fruit	8 Pizza Rolls Salad Pudding	9 Chicken Strips Corn Nutty Bar
12 Lasagna Garlic Bread Fruit cup	13 Soft Beef Taco Rice/Beans Rice Krispie Treat	14 Corn Dog Tater Tots Fruit	15 Chicken Fajitas Rice/beans Pudding	16 Pizza Fruit Cookie
19 BQ Beef sandwich Fries Fruit Cup	20 Chalupa Rice/Beans Yogurt	21 ½ Day no lunch	22 Taco Salad Dessert Pizza	23 Hamburger Baked Fries Nutty Bar
26 NO School	27 Pizza Rolls salad Cookie	28 Egg rolls Fried Rice Fortune Cookie	29 Hamburger Baked Fries Dessert Pizza	
Alternate for Mondays Ham & Cheese sub Baked chips Dessert	Alternate for Tuesdays Baked Potato Side salad Dessert	Alternate for Wednesdays Turkey & Cheese Sandwich Baked chips Dessert	Alternate for Thursdays Chef Salad Dessert	Alternate for Fridays PBJ Sandwich Baked Chips Dessert

SPORTS:



- Although UIL sports do not begin until 7th grade, we do have some sixth graders playing on the 7th grade team.
- UIL team sports include Basketball, Volleyball, Soccer, Tennis, Track.
- PE is everyday – students play a number of games: bowling, golf, soccer, football, double dutch, hockey, and more!



COMPUTERS:

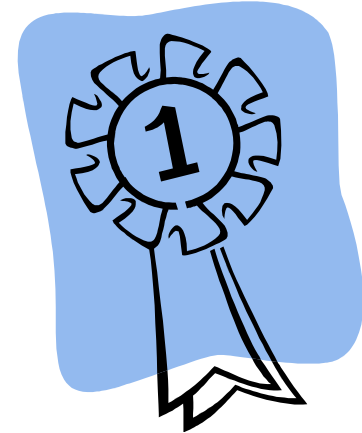


- Classrooms have computers for student use.
- Mrs. Vonkeyserlingk chose to have desk top models
- Mr. Kanipe has a class set of laptops
- Students will also use computers for projects in Art, Music and PE
- Students will be given a password to sign in anywhere. We are on a wireless network.
- Students may not use computers until the technology agreement is signed. See Webpage!



EXTRA CURRICULAR

- Math competition
- Destination Imagination
- Chess Club
- UIL Competition
- School related Sports
- Spelling Bee
- Science Fair/ Science Olympiad
- Student Council
- Builder's Club (6-8)
- Competitive Sports (6-8)



ELECTRONICS



- Students bring electronic items to school at their own risk.
- Cell phones must be turned off and in lockers during the school day. There is a \$15 fine to return a confiscated phone- and it will only be returned to the parent.



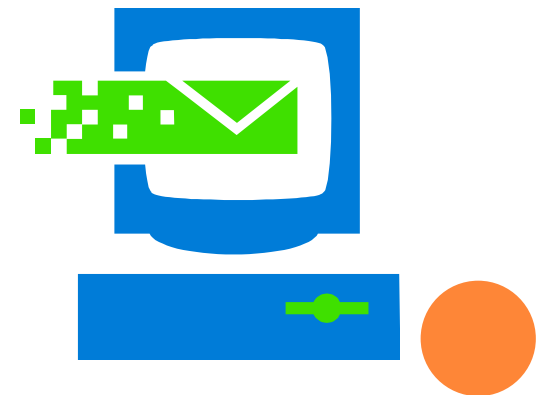
SCHOOL SUPPLIES

- A supply list will be published on the web page in June.
- Backpacks must fit into the lockers
- There may be fees for individual classes such as Art and Science.



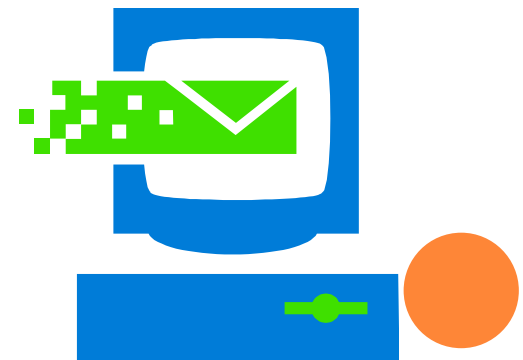
COMMUNICATION

- We are emailing experts – it saves trees and is more reliable than a preadolescent!
- Be sure we have your email; we would like to have both work and home.
- Your email address will not be shared with others
- Expect emails:
 - Monthly newsletter
 - Reminders of events and deadlines
 - Lunch information
 - Community information
 - Announcements



COMMUNICATIONS TOO!

- **Teacher Websites**
- **Assignment sheets**
- **Teacher Conference – phone, email, face to face**
- **Come and volunteer – you really will stay informed**
- **Monthly calendar updated frequently on our website.**



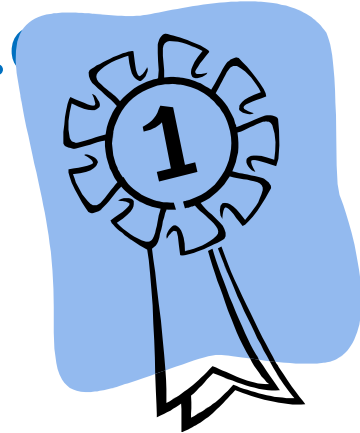
VOLUNTEERS NEEDED

- **Field Trips**
- **Classroom activities**
- **Fund Raising**
- **Sports**
- **Speakers for careers and classroom activities**



BRAGGING RIGHTS:

- National Competition-Washington D.
 - Science Bowl- 2 years in a row
- UIL Competition
 - 1st in Sweepstakes Grades 6,7 & 8
 - 2nd in Sweepstakes Grade 5
- Students competing at the state level
 - Math/Science
 - Science Olympiad
 - History Fair
- This year's TAKS scores
 - 100% in reading Grades 5 & 8. Commended: 49% of 5th grade – 70% of 8th grade.
- Exemplary TEA Campus 2008-2010



COMMUNITY SERVICE:

- **Builder's Club (Kiwanis) for grades 6-8**
 - Read to SLC
 - Assist with Kiwanis Club events
 - Beach Clean up
 - Timon's Ministry
 - Assist with SLC projects
- **Student Council**
 - Red Cross
 - Humane Society
 - Women's Shelter
 - Food Bank



CONTACT INFO:

- Phone: 654-1134
- Fax: 654-1139
- Barbara Beeler – Director
 - bbeeler@seashore.esc2.net
- Claudia Detore – Administrative Assistant
 - cdetore@seashore.esc2.net
- Kassandra Taylor– Island Foundation SMA Board Liaison
 - atascadera@yahoo.com



